

# UNITED

Forklift and  
Access Solutions



## ATHENA

### 850

BL, EVO, BI-ENERGY

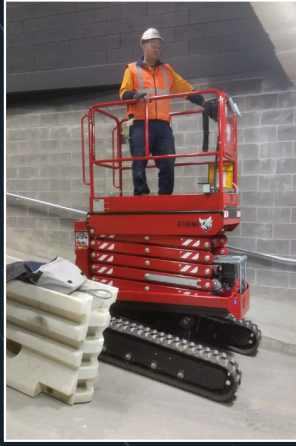


**TAKES ON CHALLENGING TERRAIN  
LIKE NO OTHER SCISSOR LIFT  
ON THE MARKET**



UNITED It's all about you





### Athena 850 BL

### Athena 850 EVO

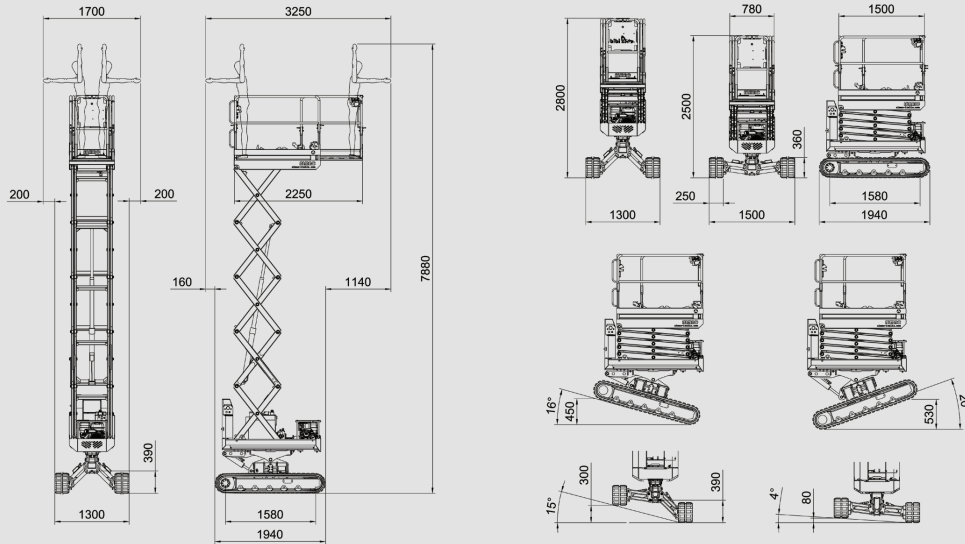
### Athena 850 Bi-Energy

Basket capacity	250 kg (2 op.)	250 kg (2 op.)	250 kg (2 op.)
Max working height	7.9 m	7.9 m	7.9 m
Max height basket floor	5.9 m	5.9 m	5.9 m
Moving height	6.1 m	6.1 m	6.1 m
Lateral levelling for moving at heights	+ / - 4°	Dynamic Drive System	Dynamic Drive System
Powered Standard	Diesel Hatz 1B40	Diesel Kubota Z482	Lithium-Ion Power Pack / Diesel Hatz 1B40
Accelerator	Automatic	Automatic	-
Undercarriage	Bi-Levelling	Bi-Levelling	Bi-Levelling
Basket levelling	Automatic	Automatic	Automatic
Longitudinal levelling front	+/- 16°	+/- 16°	+/- 16°
Longitudinal levelling rear	+/- 20°	+/- 20°	+/- 20°
Lateral levelling	+/- 15°	+/- 15°	+/- 15°
Power generator (option)	220V-1kW	220V-1kW	-
Electric motor (option)	220V-2kW	220V-2kW	-
Hydraulic commands	Proportionals	Proportionals	Proportionals
Direction-control system	Yes	Yes	Yes
Easy-drive system	Yes	Yes	Yes
Dynamic Levelling System	-	Yes	Yes
Pro-Active Levelling System	-	Yes	Yes
Kit for high speed	Max 2.20 km/h	Max 2.20 km/h	Max 1.80 km/h
Ground emergency	Yes	Yes	Yes
Control of inclination	Automatic	Automatic	Automatic
Gradeability	25°	25°	25°
Side slope	21°	21°	21°
Length	1.94 m	2.11 m	2.11 m
Width	1.30 ÷ 1.50 m	1.30 ÷ 1.50 m	1.30 ÷ 1.50 m
Minimum machine height with folded railings	1.98 m	1.98 m	1.98 m
Total weight	1990 kg	2460 kg	2460 kg
Compliance	EN 280, ANSI, CSA, ASNZS1418	EN 280, ANSI, CSA, ASNZS1418	EN 280, ANSI, CSA, ASNZS1418

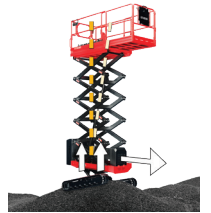
# ATHENA 850 BL

# DIMENSIONS

# FEATURES



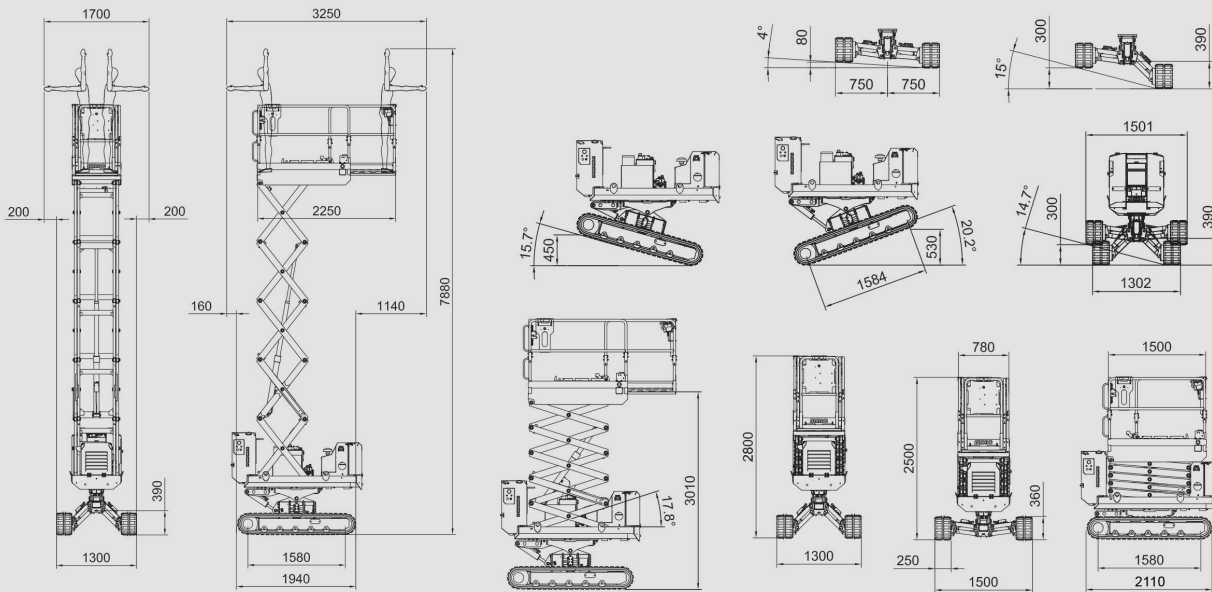
**Bi-Levelling Technology**



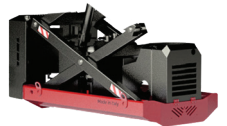
**Automatic Levelling\***

# ATHENA 850 EVO & BI-ENERGY

# DIMENSIONS



**Compact and Versatile**



**High Powered Diesel Engines**



**Watch the video**

Use a mobile phone QR reader to scan the code



## Award Winning Scissor Lifts



**Intuitive Controls**



**Extendable Platform**

\*Automatic levelling only available in the EVO model.



**WE'RE UNITED BEHIND YOUR BUSINESS**



**T: 131 607**

[unitedequipment.com.au](http://unitedequipment.com.au)

SALES | RENTALS | SERVICE | PARTS | FINANCE | TRAINING

**WE BRING MORE OF THE WORLD'S BEST TO YOU**



**KONECRANES®**

**Haulotte** >>

**ALMACRAWLER** >>



**WA**

Perth  
Bunbury

**NT**

Darwin

**SA**

Adelaide

**QLD**

Brisbane  
Mackay  
Rockhampton

**NSW**

Sydney

**VIC**

Melbourne  
Ballarat

**TAS**

Burnie